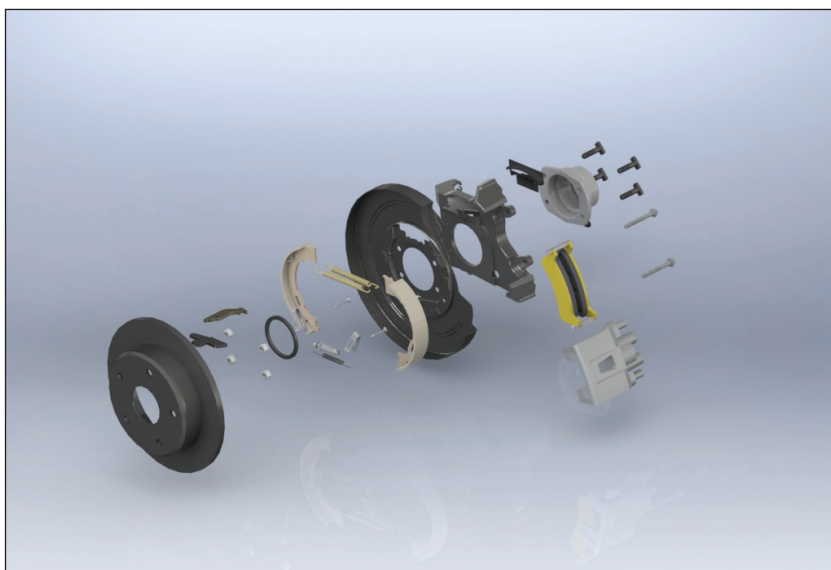




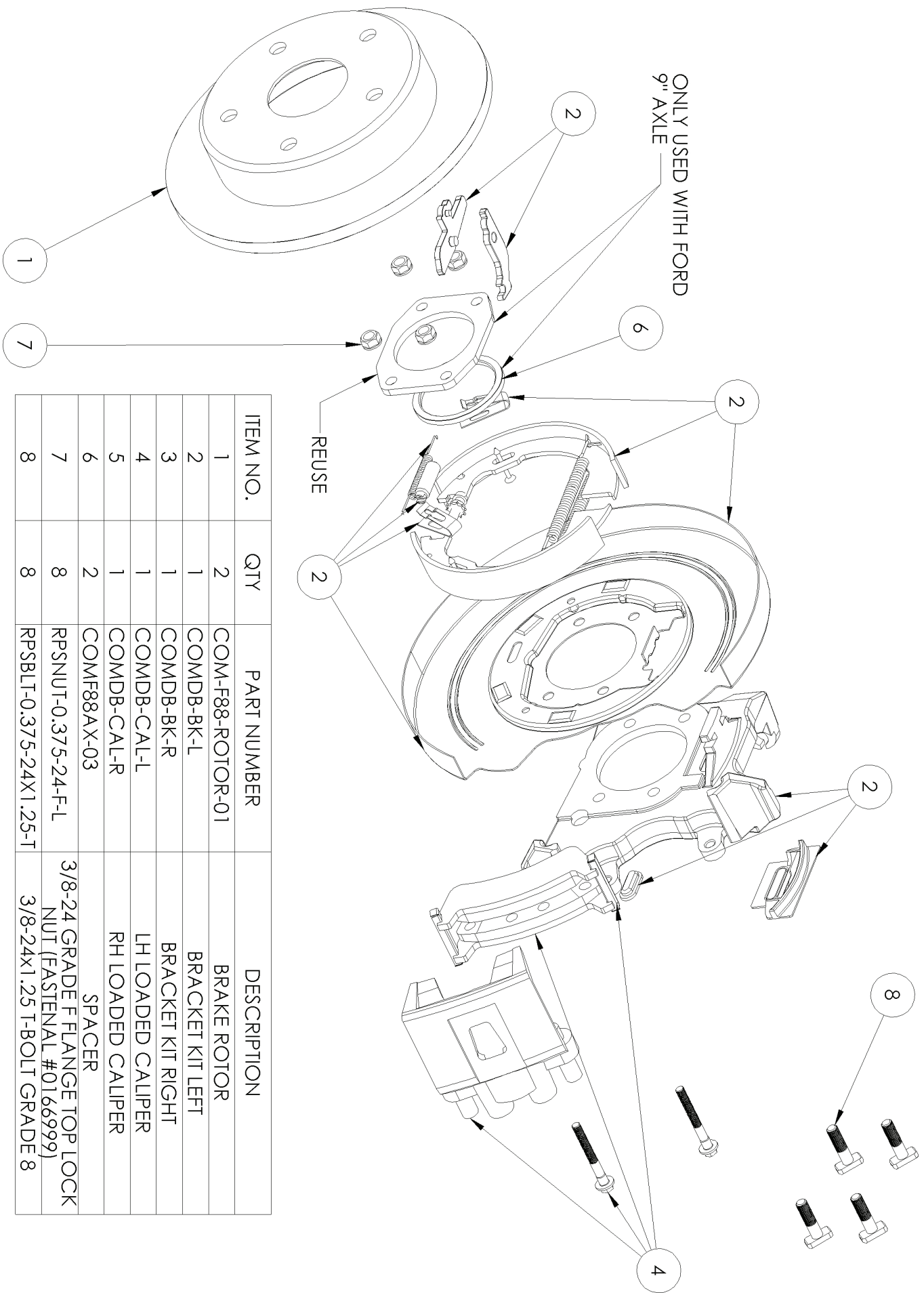
Yukon Gear & Axle

YP DBC-01 Disc Brake Kit Late Ford 9" and 8.8" Truck Installation Manual

PLEASE READ COMPLETELY BEFORE INSTALLATION



Parts List



ITEM NO.	QTY	PART NUMBER	DESCRIPTION
1	2	COM-F88-ROTOR-01	BRAKE ROTOR
2	1	COMDB-BK-L	BRACKET KIT LEFT
3	1	COMDB-BK-R	BRACKET KIT RIGHT
4	1	COMDB-CAL-L	LH LOADED CALIPER
5	1	COMDB-CAL-R	RH LOADED CALIPER
6	2	COMF88AX-03	SPACER
7	8	RPSNUT-0.375-24-F-L	3/8-24 GRADE F FLANGE TOP LOCK NUT (FASTENAL #0166999)
8	8	RPSBLT-0.375-24X1.25-T	3/8-24X1.25 T-BOLT GRADE 8

Thank you for purchasing the Yukon YP DBC-01 Disc Brake Kit. This kit will improve braking power and make brake servicing quicker and easier. Reading these instructions before you start will facilitate the installation process. When working under the vehicle be sure to use jack stands under the axles. Wear safety glasses and gloves. Before disassembly ensure that you have a late Ford 9" axle or a 8.8" truck axle with 2.00" x 3.56" brake mounting pattern, 3.15" OD axle bearings, 2.50" brake gap and popular 5-hole, 4.5" diameter wheel mounting pattern.

Required Tools

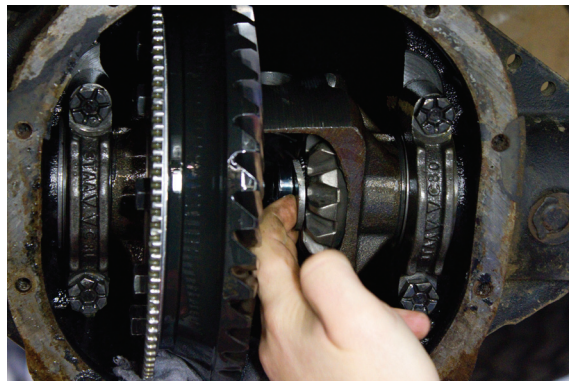
Safety Glasses
Jack and Jack Stands
Wheel Chocks
Shop rags
Appropriate wrenches, screwdrivers, socket set
Torque wrench
Brake fluid
Gear Oil (8.8 only)
Silicone Gasket Sealer (8.8 only)
Parking Brake cables to fit your specific application
Rubber brake lines to fit you specific application
3/8" - 24 Banjo bolts & washers to fit your specific application

Optional Parts

Rear wheel bearings
Rear axle outer housing seals

Installation

1. If working from the ground place one wheel chock in front of the driver's side tire and the other wheel chock behind the tire.
2. Lift and support rear axle with jack stands under the axle housing.
3. If using a lift, position lift arms in a secure position under the frame of the vehicle and lift vehicle.
4. Remove the rear wheels
5. If you are working on a 8.8" axle, remove the differential cover, cross pin bolt, cross pin and c-clips from the axles.



6. Remove the brakes, axle shafts and backing plates from the axle housing
7. It is recommended to replace the outer housing seal at this time for 8.8" applications.
8. If working on a 9" first remove the old bearing and seals. Slide the retainer plate, spacer, bearing seal, bearing and bearing retainer onto the axle in the order shown below. It is recommended to use new bearings and seals as the old ones may become damaged upon removal.

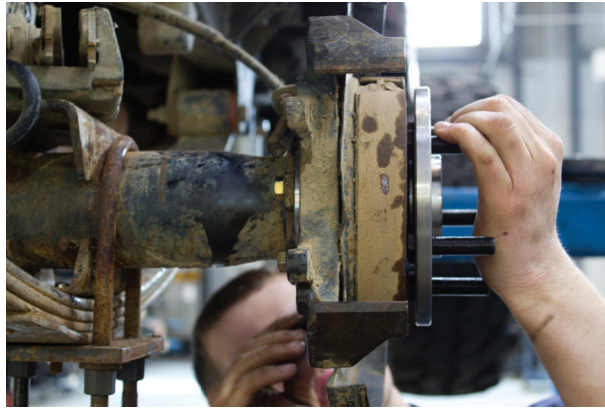


9. Install the stamped metal disc brake hardware onto the brackets (if not already installed).



10. On 8.8" axles attach the caliper brackets to the housing. The caliper mount should be facing the rear of the vehicle. Leave the existing 3/8" bolts in the brackets and fasten using the 3/8" nuts at the backside of the housing. Torque nuts to 50 lb-ft in a cross pattern. Slide the axle shafts into the housing being careful not to damage the seal.

- 11.** On 9" housings remove the existing 3/8" bolts from the bracket assemblies and use the 3/8" t-bolts and nuts supplied. Mount the backing plate assembly to the housing flange by routing the t-bolts through the backside of the housing. Slide the axle shaft assemblies into the housing being careful not to damage the seal. Torque nuts to 50 lb-ft over top of the retainer plate in a cross pattern using the access window in the axle.



- 12.** On 8.8" axles reinstall the c-clips and cross pin at the differential.
- 13.** Install the brake rotors over the wheel studs and slide into place.
- 14.** Slide the brake calipers loaded with brake pads over the rotor and into the bracket.
- 15.** Fasten the brake calipers to the brackets using the supplied M8-1.25x65mm brake caliper bolts.
- 16.** Torque brake caliper bolts to 19 lb-ft.
- 17.** Due to the large variety of applications of this kit you will need to source (2) rubber brake hoses, (2) 3/8"-24 Banjo Bolts, (4) banjo bolt washers and (2) parking brake cables.
- 18.** Attach rubber brake hoses to existing brakes lines and to the calipers.
- 19.** Attach parking brake cables to the lever arm at the back of the brackets and to the parking brake handle.
- 20.** Bleed the brakes to restore proper braking power.
- 21.** Top off brake fluid.



Yukon Gear & Axle ("Yukon") warrants the original retail purchaser that all YUKON YP DBC-01 DISCK BRAKE KIT will be free from defects in materials and workmanship for the period of one (1) year from date of sale. Yukon makes no other warranty of any kind, express or implied. All other warranties, including but not limited to an implied warranty of merchantability or fitness for a particular purpose, are excluded. This warranty is offered provided that the Yukon product has been installed and maintained in accordance with Yukon instructions, and that it has not been subject to modification, accident, abnormal use (including off-road or competition use) or misuse. This warranty is void if installation of Yukon product(s) occurs on vehicles with tires that exceed Yukon Maximum Recommended Tire Size. Upon notification of a warranty claim, Yukon shall investigate the claim of defect, and, in the event of a verified defect, shall, at their sole choice, either repair the defective product, replace it, or refund the purchase price.

This warranty does not cover, and Yukon shall not be liable for, incidental or consequential damages, including loss of time, road service charges, labor charges, inconvenience, loss of vehicle use, loss of revenues, or loss or damage to personal property (including loss or damage to vehicle parts due to the failure of the Yukon product). In addition, this warranty does not cover, and Yukon shall not be liable for, any undertaking, representation, or agreements made by dealers or other third parties selling Yukon Gear & Axle products, except where such agreements are within the provisions of this Warranty statement. Also, this warranty does not cover damage to the axle caused by or facilitated by failure of a non-Yukon component.

This agreement offers you specific legal rights. You may also have other rights which vary from state to state.